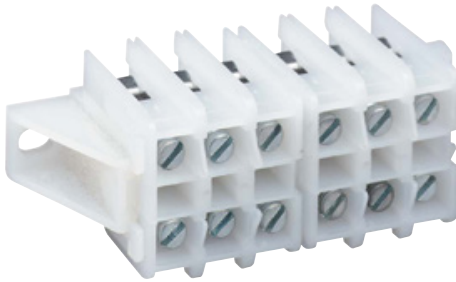




ENCLOSURES

TERMINAL BLOCKS



Terminal Block

FEATURES-SPECIFICATIONS

600 Volt –#8–#22 CU; #8–#12 AL.
50 Amp Maximum

Applications

Mounting in EXB, XJB, GR, DB Series junction boxes.

- Use in connecting and in arrangement of control wiring for control panel and switchboard applications

Features

- Terminal blocks have clamping screw-type terminals which accommodate either aluminum or copper wire. TMS marking strips are included.
- When more than one terminal strip is required, a mounting pan should be used for ease of mounting and wiring

$$C = .625 + (1.3125 \times N)$$

$$L = 1.250 + (1.3125 \times N)$$

N = NUMBER OF BLOCKS

TBWE TERMINAL BLOCKS				
CATALOG NUMBER	NO. OF CIRCUITS	DIMENSIONS		
		A	C	L
TBWE-3	3	1.25	1-7/8"	2-1/2"
TBWE-6	6	2.50	3-1/8"	3-3/4"
TBWE-9	9	3.75	4-3/8"	5"
TBWE-12	12	5.0	5-5/8"	6-1/4"
TBWE-15	15	6.25	6-7/8"	7-1/2"
TBWE-18	18	7.50	8-1/8"	8-3/4"
TBWE-21	21	8.75	9-3/8"	10"
TBWE-24	24	10.0	10-5/8"	11-1/4"
TBWE-27	27	11.25	11-7/8"	12-1/2"
TBWE-30	30	12.50	13-1/8"	13-3/4"
TBWE-33	33	13.75	14-3/8"	15"
TBWE-36	36	15.0	15-5/8"	16-1/4"
TBWE-39	39	16.25	16-7/8"	17-1/2"
TBWE-42	42	17.5	18-1/8"	18-3/4"
TBWE-45	45	18.75	19-3/8"	20"
TBWE-48	48	20.0	20-5/8"	21-1/4"
TBWE-51	51	21.25	21-7/8"	22-1/2"
TBWE-54	54	22.50	23-1/8"	23-3/4"
TBWE-57	57	23.75	24-3/8"	25"
TBWE-60	60	25.0	25-5/8"	26-1/4"

Cutler Hammer TypeTBA Modular Terminal Blocks

600 Volt-#8–#22 CU.; #8-#12 AL.

Clamping Screw Type Terminals, Type TMS Marking Strip Included

